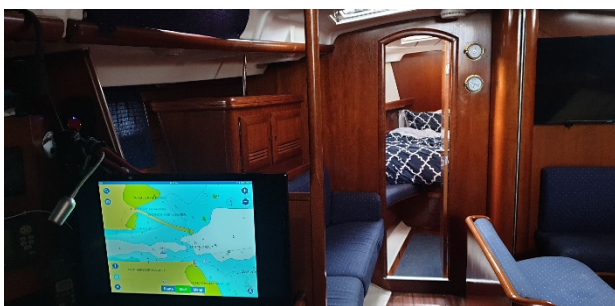




General Specs

Make:	Benetau Oceanis 47.3
Year:	2002
Length:	14.33m
Beam:	4.31m
Draft	1.70m
Displacement	11,000kgs
Price	\$210,000



An excellent example of a 2002 Benetau Oceanis 47.3

'ducksridge', a Benetau Oceanis Clipper 47.3 has been extensively equipped with cruising in mind. Twin steering stations allow ease of movement and excellent visibility for the helmsman and her roomy cockpit allows comfortable al-fresco dining for 6.

Below deck, light and comfort within her 3 cabins. With an "as new" interior trim throughout. The saloon area will comfortably seat eight. The galley is well equipped with extensive storage.

Her extensive inventory includes large 800 ltr water capacity, 2Kva generator, wind and solar and wind power generators, upgraded Garmin electronics with Autopilot, AIS and VHF Radios, Furling Genoa, Bow Thruster, Dodger & Bimini, Electric winches and so much more!

Having just been out of the water 2019 for her annual antifoul and engine service, she is ready to go on her next adventure!

'ducks ridge' is a well maintained and has been continually upgraded making her a great cruising yacht.

INVENTORY

SPECIFICATIONS	Year built	2002
	Keel	Shoal
	Hull Material	Fibreglass/GRP
	Deck materials	GRP with teak decks
	Engine	Volvo 78hp
	Propulsion	Shaft Drive
	Fuel	237 litres
	Water	750 litres in 3 tanks
	Holding Tank	2 x 85 litres
ACCOMMODATION	Description	Three Cabin layout, double berth forward with en-suite and 2 aft double cabins and head and shower. Spacious saloon with dining table.
	Cabins	3
	Heads	2
	Berths	8
	Shower	2 plus cockpit shower
	Heads	Fwd manual, Aft electric
	Galley	L shaped galley
	Refrigeration	1 x 12v fridge, icebox
	Stove	2 burner gas stove and oven
	Entertainment	CD/Radio player with cockpit and cabin speakers
	TV	Mounted TV and masthead ariel
	Hot water system	30ltr of the engine and electric
	Outdoor table	Yes, plus cover
SAILING	Description	Spacious cockpit with twin helms and easy water access. Optioned for easy sailing with electric primary winches and coach house winches, 1 x electric & 1 x manual. Bow thruster and furling genoa means easy sailing with limited crew.
	Ground tackle	Plough anchor, chain 80m, 2nd anchor
	Bilge pumps	Electric and Motor operated
	Flares	Yes
	Life jackets	22
	Life rings	6
	Fire Protection	Yes, automatic engine room control system
	Deck gear	4x winches- 3 of which are electric
	Sail inventory	Main, cruise laminate (2018), Genoa, cruise laminate (2018), Spinnaker asymmetrical, Tri Sail
	Mast/rigging	Masthead rig, Aluminium mast and book. Twin aft swept spreaders S/S wire rigging. Spinnaker pole. Standing rigging with Blue Wave Denmark fittings and wire (shrouds, forestay, backstay)
	Additional	Sail bag and lazy jacks

ELECTRICS & POWER	Autopilot	Garmin Autopilot GHP Reactor
	Wind, speed, depth	Garmin instruments x3, Garmin GMI 20, GND10, gWind, DST800 bundle includes: speed, depth & temp transducer, masthead wind transducer and GMI instrument
	Chart plotter	Garmin GPS Map 7407 xsv
	GME	Plotter
	AIS	Yacht digital 5000w WIFI enabled
	Battery Charger	Onboard
	Inverter	3000/6000w
	Wind generator	Rutland 6.10
	Solar panels	1x160w flexible, 1x160w rigid
	Marlek	Solar/wind controller 2019
	Batteries	1 x 110 deep cell (winch) 1 x 110 motor start 2 x 110 house 2 x 220 house inverter
OTHERS	LED cockpit lighting	
	Swim ladder	
	Dodger 2019	
	Bimini, installed 2019	
	Propeller:	3 blade feathering, auto stream
	Lift raft	12 persons
	Dingy	Aqua Pro 2.4m aluminium rib
	Dingy motor	4hp Mercury
	Ariel pole	Spare VHF & GPS
	Halyards renewed 2020	
	Motor/water pumps	Overhaul 2019
	Generator	Honda 2kva
	Bosun Chair	
	Rail mounted stainless steel BBQ	
SURVEY	Work or Pleasure – you decide!	
	<p>‘ducksridge’ a 2002, 47’3 Benetau in excellent condition - is a unique business and/or leisure opportunity as she holds both 1E and 2c survey classifications and a private use exemption with ANSA. (Australian Maritime Safety Authority.)</p> <p>Previously based in Sydney, ‘ducksridge’ has been engaged in selective corporate and social professionally skippered charter engagements as well as personal sailing on Sydney Harbour.</p> <p>‘ducksridge’ has been fastidiously maintained and upgraded and provides an excellent opportunity for someone looking for a business or travel lifestyle.</p> <p>1E: enables a vessel to carry 20 passengers and 2 crew (22 total) in designated smooth water</p> <p>2C: enables a vessel to operate offshore with a maximum of 9 passengers and 1 crew (10 in total)</p>	

